

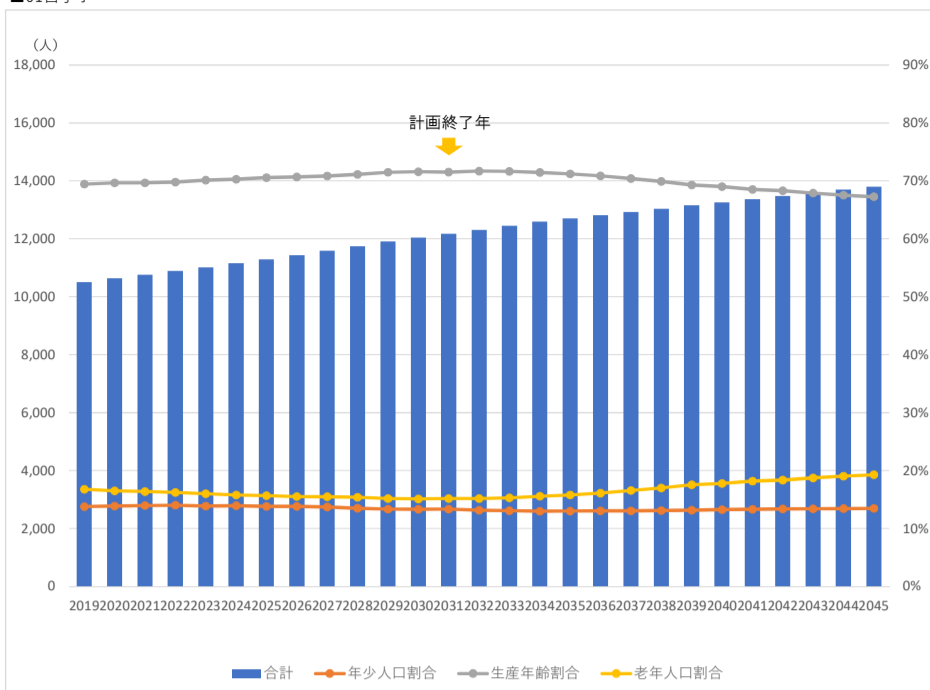
小学校区別推計人口

■01白子小

年齢3区分別人口

年	年齢3区分別人口				構成比			
	年少人口	生産年齢人口	老年人口	合計	年少人口割合	生産年齢割合	老年人口割合	合計
2019	1,447	7,301	1,764	10,512	13.8%	69.5%	16.8%	100.0%
2020	1,473	7,405	1,754	10,632	13.9%	69.7%	16.5%	100.0%
2021	1,501	7,496	1,763	10,760	13.9%	69.7%	16.4%	100.0%
2022	1,527	7,598	1,764	10,889	14.0%	69.8%	16.2%	100.0%
2023	1,527	7,727	1,764	11,018	13.9%	70.1%	16.0%	100.0%
2024	1,554	7,838	1,762	11,153	13.9%	70.3%	15.8%	100.0%
2025	1,557	7,966	1,766	11,289	13.8%	70.6%	15.6%	100.0%
2026	1,578	8,085	1,774	11,436	13.8%	70.7%	15.5%	100.0%
2027	1,588	8,208	1,792	11,588	13.7%	70.8%	15.5%	100.0%
2028	1,586	8,353	1,805	11,745	13.5%	71.1%	15.4%	100.0%
2029	1,589	8,510	1,806	11,905	13.3%	71.5%	15.2%	100.0%
2030	1,603	8,618	1,818	12,039	13.3%	71.6%	15.1%	100.0%
2031	1,624	8,706	1,846	12,175	13.3%	71.5%	15.2%	100.0%
2032	1,620	8,825	1,866	12,311	13.2%	71.7%	15.2%	100.0%
2033	1,625	8,923	1,905	12,453	13.1%	71.7%	15.3%	100.0%
2034	1,633	8,998	1,960	12,591	13.0%	71.5%	15.6%	100.0%
2035	1,651	9,046	2,007	12,703	13.0%	71.2%	15.8%	100.0%
2036	1,668	9,083	2,065	12,816	13.0%	70.9%	16.1%	100.0%
2037	1,685	9,102	2,140	12,927	13.0%	70.4%	16.6%	100.0%
2038	1,708	9,118	2,215	13,041	13.1%	69.9%	17.0%	100.0%
2039	1,732	9,111	2,309	13,151	13.2%	69.3%	17.6%	100.0%
2040	1,757	9,149	2,354	13,260	13.2%	69.0%	17.8%	100.0%
2041	1,779	9,163	2,429	13,371	13.3%	68.5%	18.2%	100.0%
2042	1,801	9,207	2,474	13,483	13.4%	68.3%	18.4%	100.0%
2043	1,821	9,225	2,544	13,590	13.4%	67.9%	18.7%	100.0%
2044	1,840	9,247	2,609	13,695	13.4%	67.5%	19.0%	100.0%
2045	1,859	9,281	2,659	13,799	13.5%	67.3%	19.3%	100.0%

■01白子小

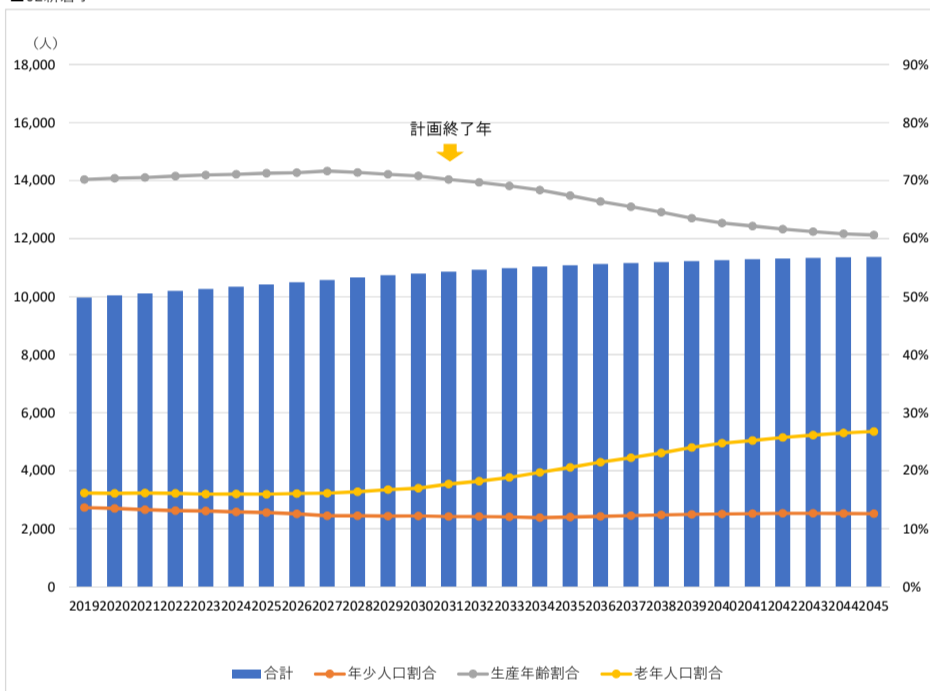


■02新倉小

年齢3区分別人口

年	年齢3区分別人口				構成比			
	年少人口	生産年齢人口	老年人口	合計	年少人口割合	生産年齢割合	老年人口割合	合計
2019	1,361	6,997	1,611	9,969	13.7%	70.2%	16.2%	100.0%
2020	1,355	7,070	1,615	10,040	13.5%	70.4%	16.1%	100.0%
2021	1,344	7,137	1,636	10,117	13.3%	70.5%	16.2%	100.0%
2022	1,339	7,214	1,639	10,193	13.1%	70.8%	16.1%	100.0%
2023	1,343	7,286	1,640	10,269	13.1%	71.0%	16.0%	100.0%
2024	1,336	7,354	1,654	10,344	12.9%	71.1%	16.0%	100.0%
2025	1,331	7,424	1,662	10,417	12.8%	71.3%	16.0%	100.0%
2026	1,320	7,490	1,686	10,496	12.6%	71.4%	16.1%	100.0%
2027	1,293	7,579	1,706	10,578	12.2%	71.7%	16.1%	100.0%
2028	1,304	7,609	1,746	10,659	12.2%	71.4%	16.4%	100.0%
2029	1,306	7,637	1,798	10,741	12.2%	71.1%	16.7%	100.0%
2030	1,318	7,650	1,834	10,802	12.2%	70.8%	17.0%	100.0%
2031	1,314	7,624	1,924	10,862	12.1%	70.2%	17.7%	100.0%
2032	1,321	7,612	1,989	10,922	12.1%	69.7%	18.2%	100.0%
2033	1,324	7,586	2,070	10,979	12.1%	69.1%	18.9%	100.0%
2034	1,314	7,546	2,175	11,036	11.9%	68.4%	19.7%	100.0%
2035	1,333	7,467	2,278	11,078	12.0%	67.4%	20.6%	100.0%
2036	1,351	7,384	2,387	11,121	12.1%	66.4%	21.5%	100.0%
2037	1,368	7,310	2,482	11,160	12.3%	65.5%	22.2%	100.0%
2038	1,385	7,230	2,580	11,195	12.4%	64.6%	23.0%	100.0%
2039	1,400	7,132	2,695	11,227	12.5%	63.5%	24.0%	100.0%
2040	1,412	7,057	2,787	11,256	12.5%	62.7%	24.8%	100.0%
2041	1,424	7,018	2,846	11,288	12.6%	62.2%	25.2%	100.0%
2042	1,432	6,973	2,911	11,316	12.7%	61.6%	25.7%	100.0%
2043	1,436	6,940	2,963	11,339	12.7%	61.2%	26.1%	100.0%
2044	1,436	6,910	3,012	11,358	12.6%	60.8%	26.5%	100.0%
2045	1,434	6,895	3,044	11,372	12.6%	60.6%	26.8%	100.0%

■02新倉小

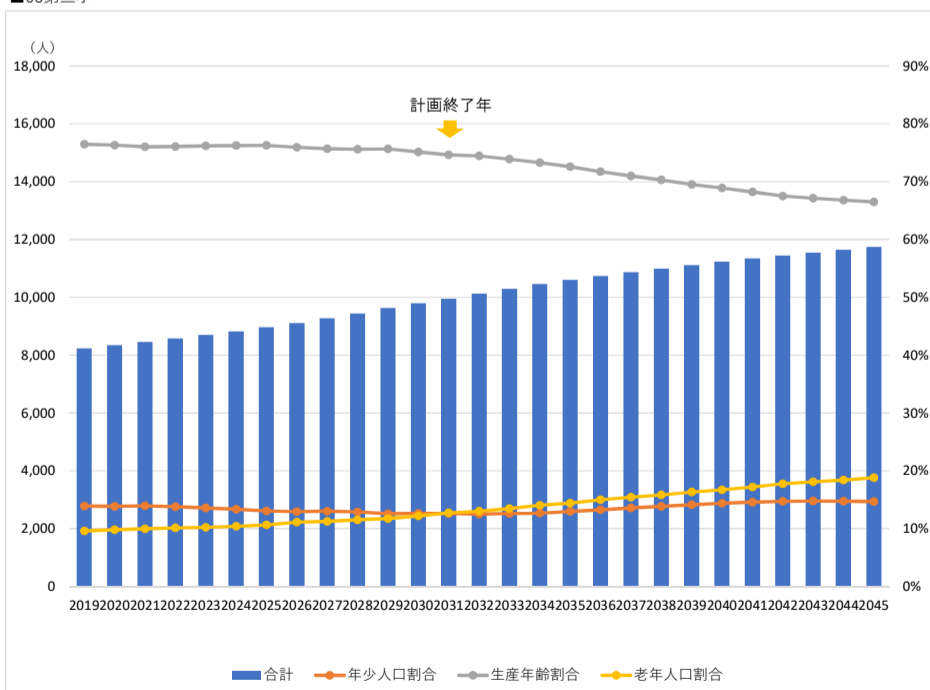


■03第三小

年齢3区分別人口

年	年齢3区分別人口				構成比			
	年少人口	生産年齢人口	老年人口	合計	年少人口割合	生産年齢割合	老年人口割合	合計
2019	1,147	6,295	791	8,233	13.9%	76.5%	9.6%	100.0%
2020	1,156	6,365	821	8,342	13.9%	76.3%	9.8%	100.0%
2021	1,181	6,435	846	8,462	14.0%	76.0%	10.0%	100.0%
2022	1,183	6,522	870	8,575	13.8%	76.1%	10.1%	100.0%
2023	1,181	6,629	890	8,701	13.6%	76.2%	10.2%	100.0%
2024	1,179	6,731	919	8,829	13.4%	76.2%	10.4%	100.0%
2025	1,170	6,841	957	8,968	13.0%	76.3%	10.7%	100.0%
2026	1,180	6,921	1,014	9,116	12.9%	75.9%	11.1%	100.0%
2027	1,209	7,021	1,045	9,274	13.0%	75.7%	11.3%	100.0%
2028	1,218	7,143	1,088	9,449	12.9%	75.6%	11.5%	100.0%
2029	1,211	7,285	1,132	9,628	12.6%	75.7%	11.8%	100.0%
2030	1,239	7,358	1,195	9,792	12.7%	75.1%	12.2%	100.0%
2031	1,254	7,430	1,269	9,953	12.6%	74.6%	12.8%	100.0%
2032	1,268	7,538	1,318	10,124	12.5%	74.5%	13.0%	100.0%
2033	1,299	7,609	1,388	10,295	12.6%	73.9%	13.5%	100.0%
2034	1,327	7,666	1,470	10,462	12.7%	73.3%	14.1%	100.0%
2035	1,377	7,700	1,528	10,605	13.0%	72.6%	14.4%	100.0%
2036	1,425	7,703	1,610	10,738	13.3%	71.7%	15.0%	100.0%
2037	1,476	7,715	1,677	10,869	13.6%	71.0%	15.4%	100.0%
2038	1,524	7,729	1,743	10,996	13.9%	70.3%	15.8%	100.0%
2039	1,571	7,731	1,816	11,118	14.1%	69.5%	16.3%	100.0%
2040	1,614	7,739	1,877	11,231	14.4%	68.9%	16.7%	100.0%
2041	1,653	7,737	1,953	11,343	14.6%	68.2%	17.2%	100.0%
2042	1,685	7,729	2,034	11,449	14.7%	67.5%	17.8%	100.0%
2043	1,707	7,752	2,089	11,548	14.8%	67.1%	18.1%	100.0%
2044	1,719	7,780	2,146	11,645	14.8%	66.8%	18.4%	100.0%
2045	1,725	7,806	2,208	11,739	14.7%	66.5%	18.8%	100.0%

■03第三小

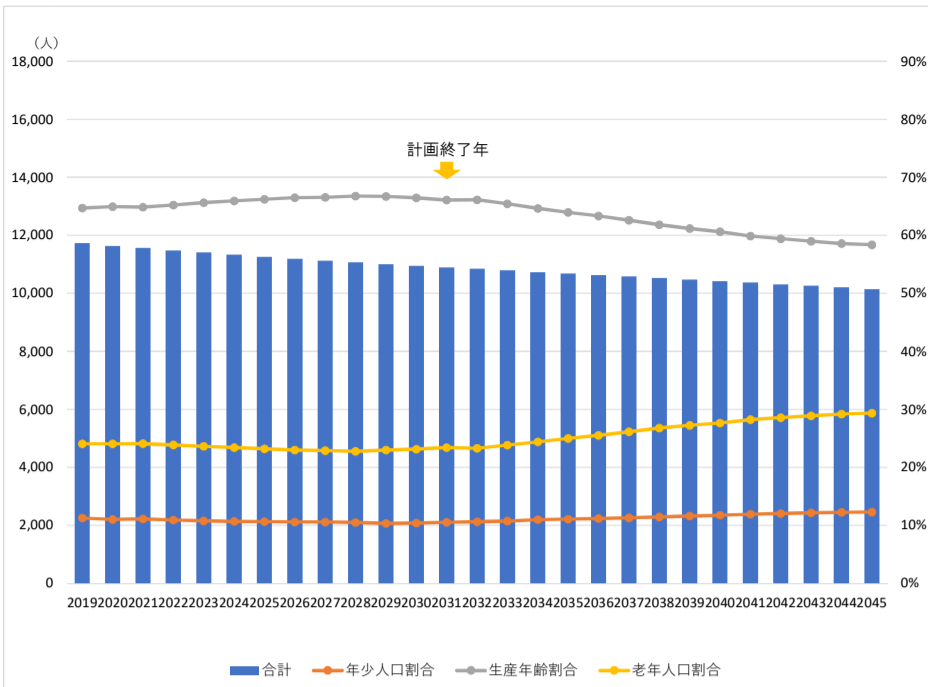


■04第四小

年齢3区分別人口

年	年齢3区分別人口				構成比			
	年少人口	生産年齢人口	老年人口	合計	年少人口割合	生産年齢割合	老年人口割合	合計
2019	1,319	7,586	2,821	11,726	11.2%	64.7%	24.1%	100.0%
2020	1,281	7,557	2,797	11,636	11.0%	64.9%	24.0%	100.0%
2021	1,283	7,494	2,782	11,558	11.1%	64.8%	24.1%	100.0%
2022	1,252	7,487	2,740	11,479	10.9%	65.2%	23.9%	100.0%
2023	1,228	7,483	2,694	11,405	10.8%	65.6%	23.6%	100.0%
2024	1,210	7,469	2,652	11,331	10.7%	65.9%	23.4%	100.0%
2025	1,197	7,452	2,608	11,258	10.6%	66.2%	23.2%	100.0%
2026	1,182	7,440	2,570	11,192	10.6%	66.5%	23.0%	100.0%
2027	1,176	7,406	2,545	11,128	10.6%	66.6%	22.9%	100.0%
2028	1,159	7,387	2,518	11,064	10.5%	66.8%	22.8%	100.0%
2029	1,136	7,336	2,528	11,001	10.3%	66.7%	23.0%	100.0%
2030	1,139	7,276	2,533	10,947	10.4%	66.5%	23.1%	100.0%
2031	1,144	7,201	2,549	10,894	10.5%	66.1%	23.4%	100.0%
2032	1,150	7,168	2,522	10,840	10.6%	66.1%	23.3%	100.0%
2033	1,158	7,057	2,571	10,786	10.7%	65.4%	23.8%	100.0%
2034	1,179	6,934	2,616	10,728	11.0%	64.6%	24.4%	100.0%
2035	1,182	6,828	2,668	10,678	11.1%	63.9%	25.0%	100.0%
2036	1,186	6,731	2,711	10,628	11.2%	63.3%	25.5%	100.0%
2037	1,194	6,621	2,762	10,577	11.3%	62.6%	26.1%	100.0%
2038	1,203	6,507	2,817	10,526	11.4%	61.8%	26.8%	100.0%
2039	1,214	6,408	2,852	10,473	11.6%	61.2%	27.2%	100.0%
2040	1,224	6,316	2,878	10,418	11.7%	60.6%	27.6%	100.0%
2041	1,234	6,207	2,926	10,367	11.9%	59.9%	28.2%	100.0%
2042	1,241	6,128	2,945	10,314	12.0%	59.4%	28.6%	100.0%
2043	1,247	6,052	2,962	10,261	12.2%	59.0%	28.9%	100.0%
2044	1,250	5,977	2,979	10,206	12.2%	58.6%	29.2%	100.0%
2045	1,247	5,923	2,978	10,147	12.3%	58.4%	29.3%	100.0%

■04第四小

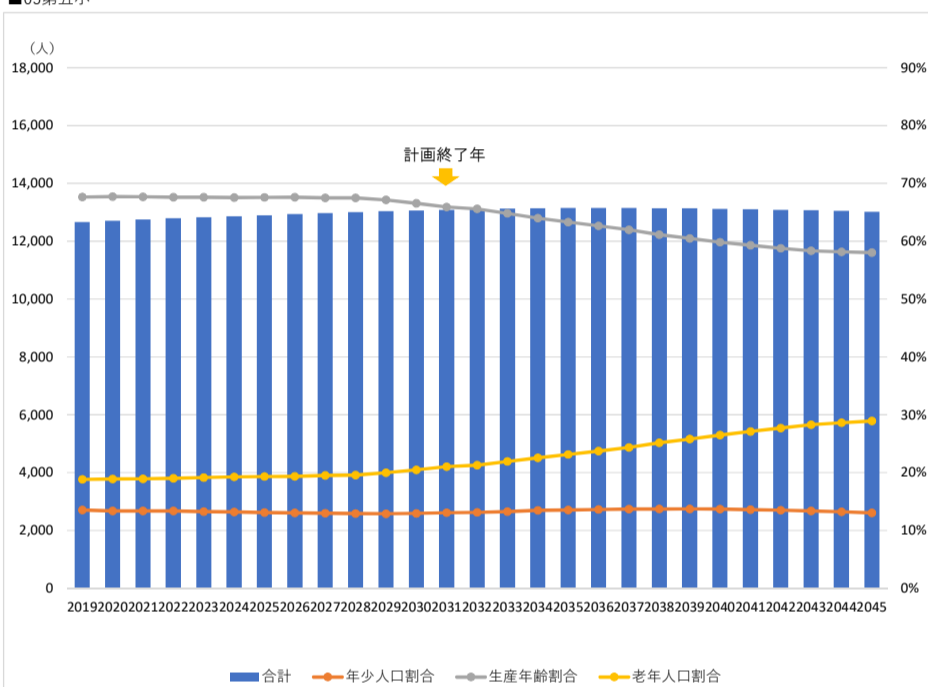


■05第五小

年齢3区分別人口

年	年齢3区分別人口				構成比			
	年少人口	生産年齢人口	老年人口	合計	年少人口割合	生産年齢割合	老年人口割合	合計
2019	1,713	8,568	2,384	12,665	13.5%	67.7%	18.8%	100.0%
2020	1,700	8,604	2,401	12,706	13.4%	67.7%	18.9%	100.0%
2021	1,706	8,631	2,413	12,750	13.4%	67.7%	18.9%	100.0%
2022	1,709	8,649	2,434	12,791	13.4%	67.6%	19.0%	100.0%
2023	1,702	8,675	2,454	12,831	13.3%	67.6%	19.1%	100.0%
2024	1,697	8,693	2,477	12,867	13.2%	67.6%	19.3%	100.0%
2025	1,689	8,719	2,493	12,900	13.1%	67.6%	19.3%	100.0%
2026	1,684	8,750	2,504	12,938	13.0%	67.6%	19.4%	100.0%
2027	1,684	8,757	2,532	12,972	13.0%	67.5%	19.5%	100.0%
2028	1,680	8,781	2,547	13,008	12.9%	67.5%	19.6%	100.0%
2029	1,681	8,756	2,604	13,041	12.9%	67.1%	20.0%	100.0%
2030	1,691	8,697	2,675	13,063	12.9%	66.6%	20.5%	100.0%
2031	1,708	8,625	2,754	13,087	13.1%	65.9%	21.0%	100.0%
2032	1,719	8,601	2,790	13,110	13.1%	65.6%	21.3%	100.0%
2033	1,739	8,512	2,879	13,130	13.2%	64.8%	21.9%	100.0%
2034	1,769	8,413	2,963	13,145	13.5%	64.0%	22.5%	100.0%
2035	1,781	8,324	3,044	13,149	13.5%	63.3%	23.1%	100.0%
2036	1,790	8,242	3,120	13,152	13.6%	62.7%	23.7%	100.0%
2037	1,798	8,151	3,203	13,152	13.7%	62.0%	24.4%	100.0%
2038	1,802	8,038	3,307	13,148	13.7%	61.1%	25.2%	100.0%
2039	1,801	7,949	3,389	13,138	13.7%	60.5%	25.8%	100.0%
2040	1,794	7,854	3,475	13,123	13.7%	59.8%	26.5%	100.0%
2041	1,783	7,775	3,551	13,109	13.6%	59.3%	27.1%	100.0%
2042	1,768	7,696	3,627	13,091	13.5%	58.8%	27.7%	100.0%
2043	1,749	7,627	3,695	13,070	13.4%	58.4%	28.3%	100.0%
2044	1,725	7,586	3,733	13,044	13.2%	58.2%	28.6%	100.0%
2045	1,697	7,552	3,765	13,014	13.0%	58.0%	28.9%	100.0%

■05第五小

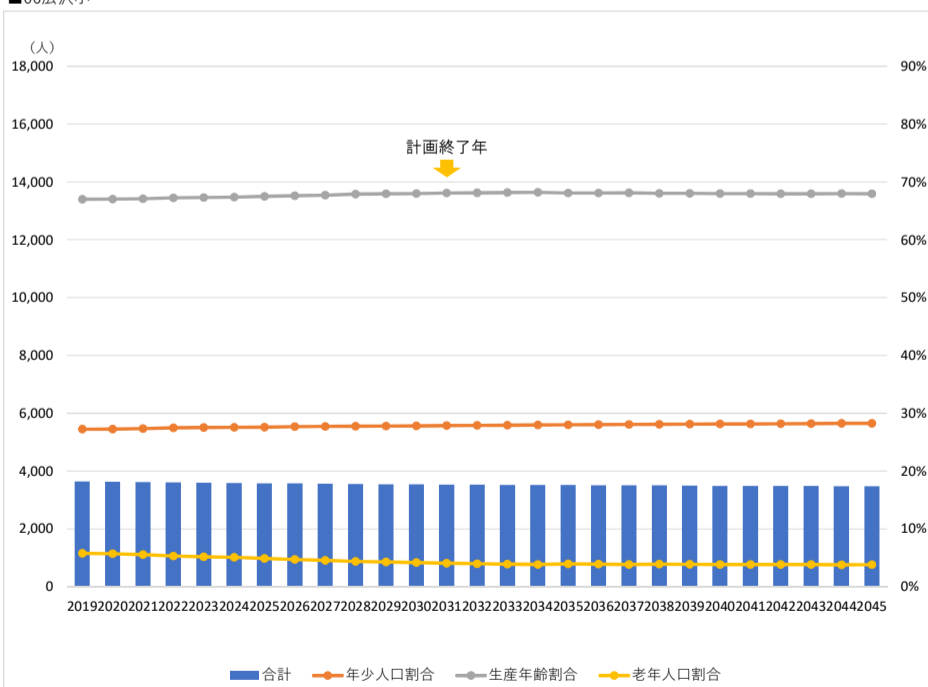


■06広沢小

年齢3区分別人口

年	年齢3区分別人口				構成比			
	年少人口	生産年齢人口	老年人口	合計	年少人口割合	生産年齢割合	老年人口割合	合計
2019	991	2,437	210	3,638	27.2%	67.0%	5.8%	100.0%
2020	989	2,432	207	3,627	27.3%	67.0%	5.7%	100.0%
2021	990	2,426	201	3,617	27.4%	67.1%	5.6%	100.0%
2022	990	2,425	191	3,607	27.5%	67.3%	5.3%	100.0%
2023	990	2,420	186	3,596	27.5%	67.3%	5.2%	100.0%
2024	988	2,415	183	3,586	27.6%	67.4%	5.1%	100.0%
2025	987	2,414	175	3,577	27.6%	67.5%	4.9%	100.0%
2026	988	2,413	168	3,569	27.7%	67.6%	4.7%	100.0%
2027	987	2,411	163	3,561	27.7%	67.7%	4.6%	100.0%
2028	986	2,413	155	3,553	27.7%	67.9%	4.4%	100.0%
2029	985	2,410	151	3,546	27.8%	68.0%	4.3%	100.0%
2030	985	2,407	148	3,540	27.8%	68.0%	4.2%	100.0%
2031	985	2,406	143	3,534	27.9%	68.1%	4.1%	100.0%
2032	985	2,404	140	3,529	27.9%	68.1%	4.0%	100.0%
2033	984	2,402	137	3,524	27.9%	68.2%	3.9%	100.0%
2034	984	2,399	135	3,518	28.0%	68.2%	3.8%	100.0%
2035	984	2,392	138	3,514	28.0%	68.1%	3.9%	100.0%
2036	984	2,388	137	3,509	28.0%	68.1%	3.9%	100.0%
2037	983	2,387	135	3,505	28.1%	68.1%	3.8%	100.0%
2038	983	2,381	137	3,501	28.1%	68.0%	3.9%	100.0%
2039	983	2,379	135	3,497	28.1%	68.0%	3.9%	100.0%
2040	983	2,375	135	3,493	28.1%	68.0%	3.9%	100.0%
2041	983	2,372	134	3,489	28.2%	68.0%	3.9%	100.0%
2042	983	2,369	134	3,485	28.2%	68.0%	3.9%	100.0%
2043	982	2,366	134	3,482	28.2%	67.9%	3.9%	100.0%
2044	982	2,364	132	3,479	28.2%	68.0%	3.8%	100.0%
2045	982	2,361	133	3,475	28.3%	67.9%	3.8%	100.0%

■06広沢小

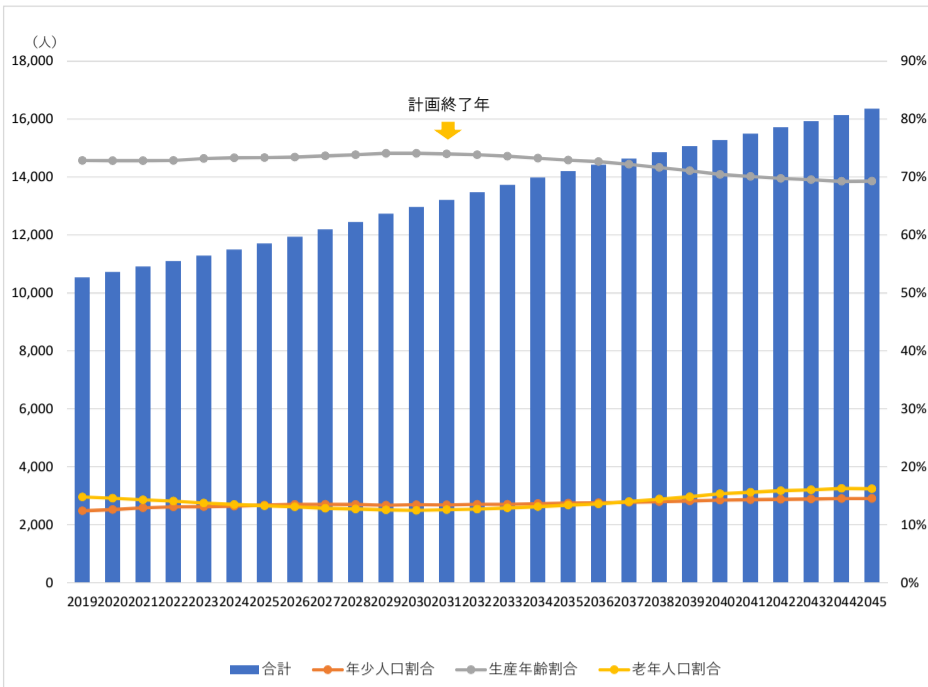


■07北原小

年齢3区分別人口

年	年齢3区分別人口				構成比			
	年少人口	生産年齢人口	老年人口	合計	年少人口割合	生産年齢割合	老年人口割合	合計
2019	1,306	7,679	1,557	10,542	12.4%	72.8%	14.8%	100.0%
2020	1,350	7,810	1,562	10,723	12.6%	72.8%	14.6%	100.0%
2021	1,409	7,946	1,558	10,913	12.9%	72.8%	14.3%	100.0%
2022	1,452	8,086	1,560	11,098	13.1%	72.9%	14.1%	100.0%
2023	1,478	8,265	1,548	11,290	13.1%	73.2%	13.7%	100.0%
2024	1,517	8,426	1,549	11,493	13.2%	73.3%	13.5%	100.0%
2025	1,568	8,589	1,554	11,711	13.4%	73.3%	13.3%	100.0%
2026	1,609	8,773	1,562	11,944	13.5%	73.5%	13.1%	100.0%
2027	1,646	8,982	1,565	12,193	13.5%	73.7%	12.8%	100.0%
2028	1,677	9,198	1,582	12,457	13.5%	73.8%	12.7%	100.0%
2029	1,701	9,434	1,597	12,733	13.4%	74.1%	12.5%	100.0%
2030	1,742	9,613	1,617	12,972	13.4%	74.1%	12.5%	100.0%
2031	1,774	9,780	1,663	13,218	13.4%	74.0%	12.6%	100.0%
2032	1,818	9,951	1,705	13,474	13.5%	73.9%	12.7%	100.0%
2033	1,855	10,110	1,770	13,734	13.5%	73.6%	12.9%	100.0%
2034	1,907	10,252	1,834	13,992	13.6%	73.3%	13.1%	100.0%
2035	1,946	10,359	1,900	14,205	13.7%	72.9%	13.4%	100.0%
2036	1,985	10,480	1,956	14,422	13.8%	72.7%	13.6%	100.0%
2037	2,028	10,567	2,042	14,638	13.9%	72.2%	14.0%	100.0%
2038	2,075	10,642	2,138	14,855	14.0%	71.6%	14.4%	100.0%
2039	2,126	10,712	2,232	15,070	14.1%	71.1%	14.8%	100.0%
2040	2,173	10,767	2,342	15,283	14.2%	70.5%	15.3%	100.0%
2041	2,217	10,865	2,416	15,498	14.3%	70.1%	15.6%	100.0%
2042	2,260	10,964	2,489	15,713	14.4%	69.8%	15.8%	100.0%
2043	2,300	11,078	2,551	15,929	14.4%	69.5%	16.0%	100.0%
2044	2,340	11,181	2,625	16,146	14.5%	69.3%	16.3%	100.0%
2045	2,375	11,339	2,649	16,363	14.5%	69.3%	16.2%	100.0%

■07北原小

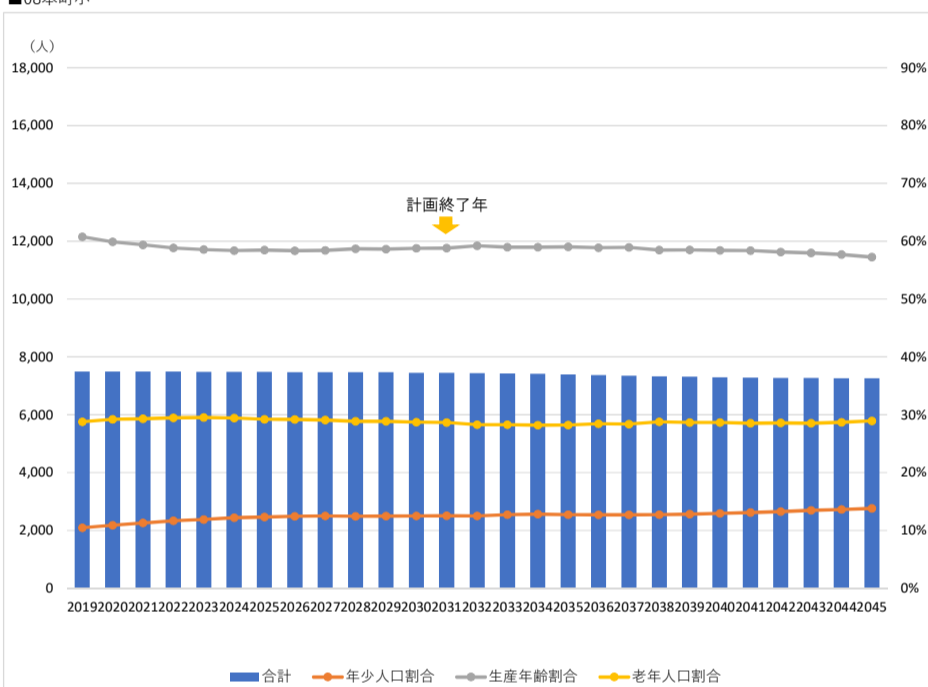


■08本町小

年齢3区分別人口

年	年齢3区分別人口				構成比			
	年少人口	生産年齢人口	老年人口	合計	年少人口割合	生産年齢割合	老年人口割合	合計
2019	783	4,553	2,156	7,492	10.5%	60.8%	28.8%	100.0%
2020	816	4,489	2,188	7,493	10.9%	59.9%	29.2%	100.0%
2021	848	4,451	2,196	7,495	11.3%	59.4%	29.3%	100.0%
2022	875	4,410	2,208	7,493	11.7%	58.9%	29.5%	100.0%
2023	890	4,387	2,212	7,489	11.9%	58.6%	29.5%	100.0%
2024	912	4,369	2,204	7,484	12.2%	58.4%	29.4%	100.0%
2025	921	4,373	2,184	7,478	12.3%	58.5%	29.2%	100.0%
2026	930	4,363	2,183	7,476	12.4%	58.4%	29.2%	100.0%
2027	934	4,367	2,174	7,475	12.5%	58.4%	29.1%	100.0%
2028	930	4,387	2,157	7,474	12.4%	58.7%	28.9%	100.0%
2029	933	4,381	2,157	7,472	12.5%	58.6%	28.9%	100.0%
2030	932	4,383	2,141	7,457	12.5%	58.8%	28.7%	100.0%
2031	933	4,380	2,134	7,446	12.5%	58.8%	28.7%	100.0%
2032	930	4,403	2,103	7,437	12.5%	59.2%	28.3%	100.0%
2033	946	4,380	2,102	7,428	12.7%	59.0%	28.3%	100.0%
2034	951	4,375	2,091	7,417	12.8%	59.0%	28.2%	100.0%
2035	941	4,365	2,087	7,394	12.7%	59.0%	28.2%	100.0%
2036	935	4,341	2,096	7,373	12.7%	58.9%	28.4%	100.0%
2037	932	4,333	2,086	7,351	12.7%	58.9%	28.4%	100.0%
2038	933	4,289	2,110	7,332	12.7%	58.5%	28.8%	100.0%
2039	937	4,279	2,096	7,312	12.8%	58.5%	28.7%	100.0%
2040	944	4,261	2,091	7,296	12.9%	58.4%	28.7%	100.0%
2041	953	4,252	2,079	7,285	13.1%	58.4%	28.5%	100.0%
2042	965	4,229	2,082	7,276	13.3%	58.1%	28.6%	100.0%
2043	978	4,215	2,075	7,268	13.5%	58.0%	28.5%	100.0%
2044	989	4,190	2,082	7,261	13.6%	57.7%	28.7%	100.0%
2045	1,001	4,155	2,099	7,256	13.8%	57.3%	28.9%	100.0%

■08本町小



■09下新倉小

年齢3区分別人口

年	年齢3区分別人口				構成比			
	年少人口	生産年齢人口	老年人口	合計	年少人口割合	生産年齢割合	老年人口割合	合計
2019	1,354	5,385	1,325	8,064	16.8%	66.8%	16.4%	100.0%
2020	1,345	5,404	1,332	8,080	16.6%	66.9%	16.5%	100.0%
2021	1,312	5,440	1,347	8,100	16.2%	67.2%	16.6%	100.0%
2022	1,283	5,493	1,341	8,117	15.8%	67.7%	16.5%	100.0%
2023	1,245	5,542	1,346	8,133	15.3%	68.1%	16.5%	100.0%
2024	1,210	5,590	1,346	8,146	14.9%	68.6%	16.5%	100.0%
2025	1,161	5,637	1,360	8,158	14.2%	69.1%	16.7%	100.0%
2026	1,101	5,696	1,379	8,175	13.5%	69.7%	16.9%	100.0%
2027	1,037	5,763	1,393	8,193	12.7%	70.3%	17.0%	100.0%
2028	1,000	5,783	1,428	8,210	12.2%	70.4%	17.4%	100.0%
2029	949	5,831	1,444	8,224	11.5%	70.9%	17.6%	100.0%
2030	899	5,874	1,458	8,230	10.9%	71.4%	17.7%	100.0%
2031	860	5,880	1,499	8,239	10.4%	71.4%	18.2%	100.0%
2032	839	5,882	1,524	8,245	10.2%	71.3%	18.5%	100.0%
2033	810	5,842	1,596	8,248	9.8%	70.8%	19.3%	100.0%
2034	791	5,787	1,667	8,245	9.6%	70.2%	20.2%	100.0%
2035	784	5,724	1,728	8,237	9.5%	69.5%	21.0%	100.0%
2036	780	5,654	1,794	8,228	9.5%	68.7%	21.8%	100.0%
2037	779	5,561	1,876	8,216	9.5%	67.7%	22.8%	100.0%
2038	780	5,475	1,947	8,202	9.5%	66.8%	23.7%	100.0%
2039	784	5,373	2,028	8,185	9.6%	65.6%	24.8%	100.0%
2040	790	5,280	2,099	8,169	9.7%	64.6%	25.7%	100.0%
2041	797	5,181	2,178	8,156	9.8%	63.5%	26.7%	100.0%
2042	804	5,098	2,238	8,140	9.9%	62.6%	27.5%	100.0%
2043	812	5,022	2,290	8,124	10.0%	61.8%	28.2%	100.0%
2044	820	4,944	2,341	8,105	10.1%	61.0%	28.9%	100.0%
2045	828	4,859	2,397	8,084	10.2%	60.1%	29.6%	100.0%

■09下新倉小

