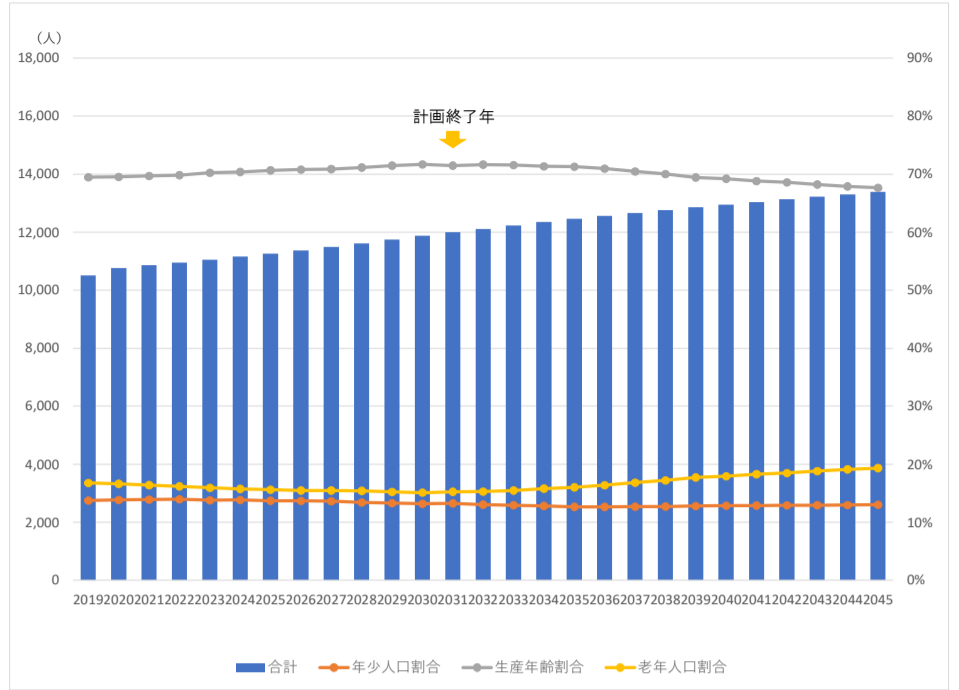


小学校区別推計人口(再推計)

■01白子小

年齢3区分別人口	※2020年までは実績値			構成比				
	年少人口	生産年齢人口	老年人口	合計	年少人口割合	生産年齢割合	老年人口割合	合計
2019	1,447	7,301	1,764	10,512	13.8%	69.5%	16.8%	100.0%
2020	1,490	7,479	1,790	10,759	13.8%	69.5%	16.6%	100.0%
2021	1,510	7,565	1,783	10,857	13.9%	69.7%	16.4%	100.0%
2022	1,530	7,651	1,774	10,954	14.0%	69.8%	16.2%	100.0%
2023	1,525	7,762	1,764	11,051	13.8%	70.2%	16.0%	100.0%
2024	1,545	7,850	1,757	11,153	13.9%	70.4%	15.8%	100.0%
2025	1,545	7,956	1,756	11,256	13.7%	70.7%	15.6%	100.0%
2026	1,559	8,051	1,762	11,372	13.7%	70.8%	15.5%	100.0%
2027	1,565	8,145	1,781	11,491	13.6%	70.9%	15.5%	100.0%
2028	1,557	8,265	1,790	11,612	13.4%	71.2%	15.4%	100.0%
2029	1,559	8,391	1,790	11,740	13.3%	71.5%	15.2%	100.0%
2030	1,568	8,514	1,794	11,876	13.2%	71.7%	15.1%	100.0%
2031	1,591	8,572	1,831	11,994	13.3%	71.5%	15.3%	100.0%
2032	1,580	8,677	1,853	12,110	13.0%	71.7%	15.3%	100.0%
2033	1,583	8,755	1,893	12,232	12.9%	71.6%	15.5%	100.0%
2034	1,584	8,809	1,956	12,349	12.8%	71.3%	15.8%	100.0%
2035	1,580	8,888	1,999	12,467	12.7%	71.3%	16.0%	100.0%
2036	1,594	8,915	2,057	12,567	12.7%	70.9%	16.4%	100.0%
2037	1,608	8,923	2,133	12,664	12.7%	70.5%	16.8%	100.0%
2038	1,627	8,938	2,197	12,762	12.8%	70.0%	17.2%	100.0%
2039	1,646	8,928	2,282	12,856	12.8%	69.4%	17.7%	100.0%
2040	1,666	8,960	2,321	12,947	12.9%	69.2%	17.9%	100.0%
2041	1,682	8,971	2,386	13,039	12.9%	68.8%	18.3%	100.0%
2042	1,697	9,006	2,427	13,131	12.9%	68.6%	18.5%	100.0%
2043	1,713	9,018	2,488	13,219	13.0%	68.2%	18.8%	100.0%
2044	1,729	9,031	2,545	13,305	13.0%	67.9%	19.1%	100.0%
2045	1,743	9,055	2,588	13,387	13.0%	67.6%	19.3%	100.0%

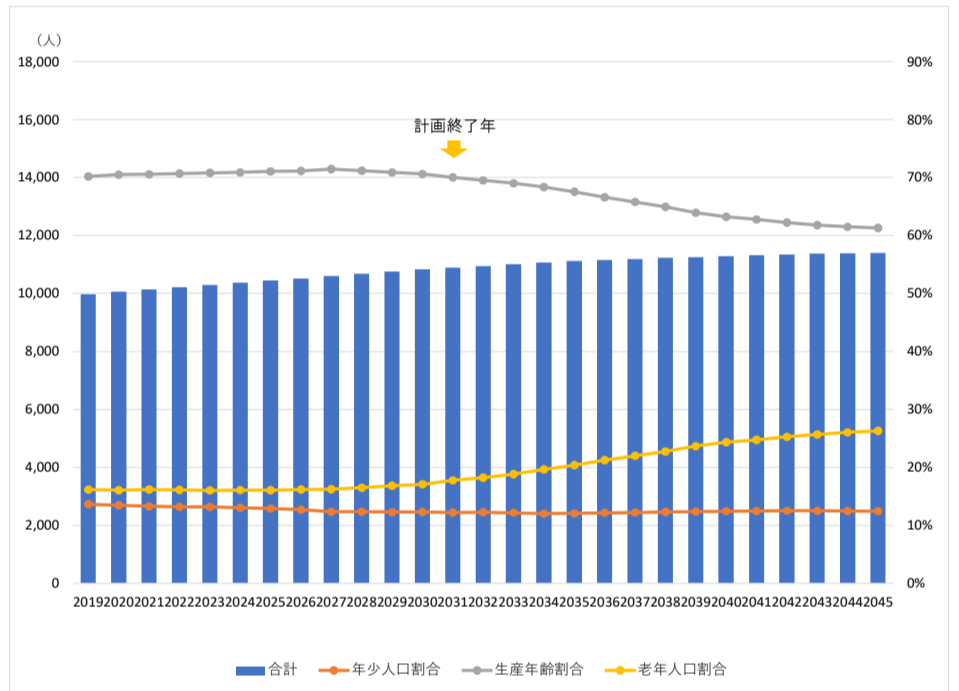
■01白子小



■02新倉小

年齢3区分別人口	※2020年までは実績値			構成比				
	年少人口	生産年齢人口	老年人口	合計	年少人口割合	生産年齢割合	老年人口割合	合計
2019	1,361	6,997	1,611	9,969	13.7%	70.2%	16.2%	100.0%
2020	1,355	7,090	1,614	10,059	13.5%	70.5%	16.0%	100.0%
2021	1,347	7,151	1,640	10,138	13.3%	70.5%	16.2%	100.0%
2022	1,348	7,219	1,648	10,215	13.2%	70.7%	16.1%	100.0%
2023	1,356	7,285	1,649	10,291	13.2%	70.8%	16.0%	100.0%
2024	1,351	7,346	1,669	10,366	13.0%	70.9%	16.1%	100.0%
2025	1,347	7,417	1,675	10,439	12.9%	71.1%	16.0%	100.0%
2026	1,334	7,482	1,701	10,518	12.7%	71.1%	16.2%	100.0%
2027	1,307	7,568	1,721	10,596	12.3%	71.4%	16.2%	100.0%
2028	1,320	7,595	1,759	10,674	12.4%	71.2%	16.5%	100.0%
2029	1,321	7,621	1,811	10,754	12.3%	70.9%	16.8%	100.0%
2030	1,334	7,647	1,849	10,829	12.3%	70.6%	17.1%	100.0%
2031	1,328	7,626	1,935	10,890	12.2%	70.0%	17.8%	100.0%
2032	1,343	7,609	1,997	10,949	12.3%	69.5%	18.2%	100.0%
2033	1,340	7,593	2,073	11,006	12.2%	69.0%	18.8%	100.0%
2034	1,328	7,561	2,172	11,062	12.0%	68.4%	19.6%	100.0%
2035	1,341	7,506	2,266	11,113	12.1%	67.5%	20.4%	100.0%
2036	1,356	7,427	2,372	11,155	12.2%	66.6%	21.3%	100.0%
2037	1,370	7,362	2,460	11,193	12.2%	65.8%	22.0%	100.0%
2038	1,383	7,289	2,554	11,225	12.3%	64.9%	22.7%	100.0%
2039	1,393	7,197	2,666	11,256	12.4%	63.9%	23.7%	100.0%
2040	1,403	7,134	2,748	11,284	12.4%	63.2%	24.4%	100.0%
2041	1,412	7,103	2,802	11,317	12.5%	62.8%	24.8%	100.0%
2042	1,418	7,059	2,867	11,344	12.5%	62.2%	25.3%	100.0%
2043	1,422	7,026	2,921	11,369	12.5%	61.8%	25.7%	100.0%
2044	1,421	7,003	2,966	11,389	12.5%	61.5%	26.0%	100.0%
2045	1,417	6,989	2,997	11,403	12.4%	61.3%	26.3%	100.0%

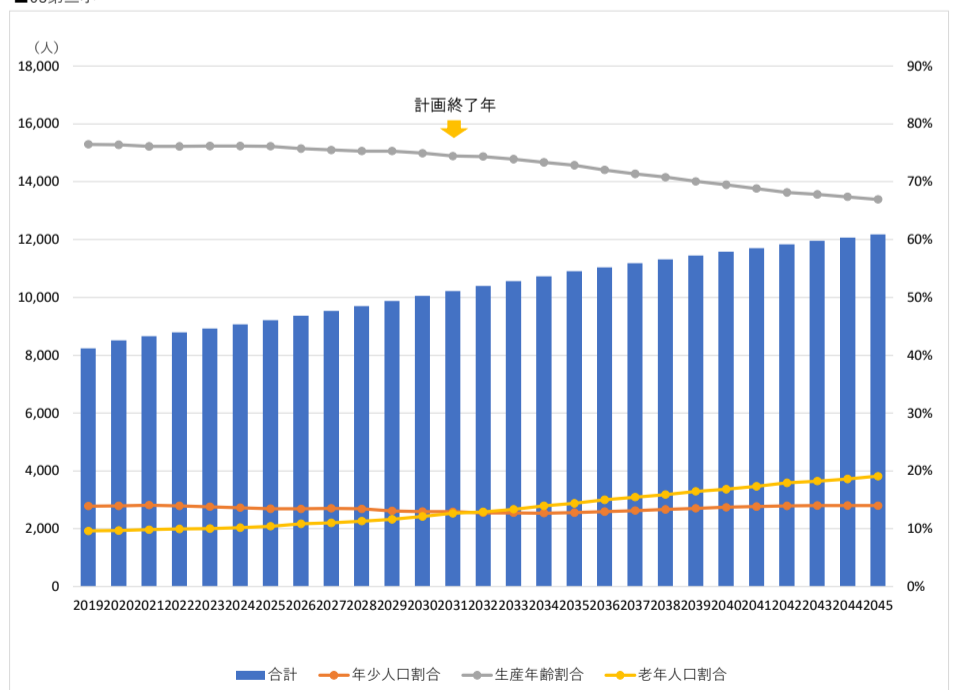
■02新倉小



■03第三小

年齢3区分別人口	※2020年までは実績値			構成比				
	年少人口	生産年齢人口	老年人口	合計	年少人口割合	生産年齢割合	老年人口割合	合計
2019	1,147	6,295	791	8,233	13.9%	76.5%	9.6%	100.0%
2020	1,188	6,503	823	8,514	14.0%	76.4%	9.7%	100.0%
2021	1,218	6,585	849	8,652	14.1%	76.1%	9.8%	100.0%
2022	1,226	6,684	873	8,783	14.0%	76.1%	9.9%	100.0%
2023	1,232	6,796	893	8,921	13.8%	76.2%	10.0%	100.0%
2024	1,238	6,903	923	9,063	13.7%	76.2%	10.2%	100.0%
2025	1,239	7,012	960	9,210	13.4%	76.1%	10.4%	100.0%
2026	1,257	7,092	1,017	9,366	13.4%	75.7%	10.9%	100.0%
2027	1,288	7,191	1,048	9,527	13.5%	75.5%	11.0%	100.0%
2028	1,301	7,302	1,096	9,699	13.4%	75.3%	11.3%	100.0%
2029	1,292	7,433	1,148	9,872	13.1%	75.3%	11.6%	100.0%
2030	1,302	7,535	1,218	10,056	12.9%	74.9%	12.1%	100.0%
2031	1,321	7,606	1,291	10,218	12.9%	74.4%	12.6%	100.0%
2032	1,324	7,726	1,339	10,388	12.7%	74.4%	12.9%	100.0%
2033	1,344	7,806	1,410	10,561	12.7%	73.9%	13.4%	100.0%
2034	1,363	7,870	1,497	10,730	12.7%	73.3%	14.0%	100.0%
2035	1,391	7,939	1,567	10,897	12.8%	72.9%	14.4%	100.0%
2036	1,430	7,951	1,657	11,038	13.0%	72.0%	15.0%	100.0%
2037	1,471	7,979	1,729	11,180	13.2%	71.4%	15.5%	100.0%
2038	1,508	8,008	1,800	11,316	13.3%	70.8%	15.9%	100.0%
2039	1,547	8,021	1,883	11,451	13.5%	70.0%	16.4%	100.0%
2040	1,585	8,043	1,951	11,579	13.7%	69.5%	16.8%	100.0%
2041	1,620	8,058	2,029	11,707	13.8%	68.8%	17.3%	100.0%
2042	1,650	8,062	2,119	11,831	13.9%	68.1%	17.9%	100.0%
2043	1,673	8,100	2,177	11,951	14.0%	67.8%	18.2%	100.0%
2044	1,692	8,132	2,245	12,069	14.0%	67.4%	18.6%	100.0%
2045	1,703	8,156	2,323	12,183	14.0%	66.9%	19.1%	100.0%

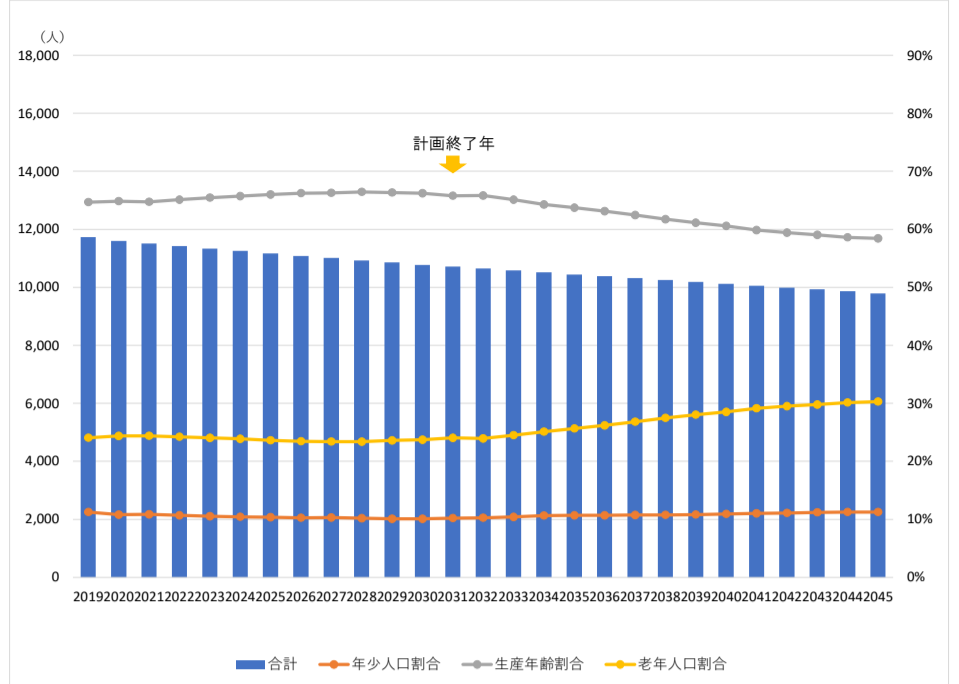
■03第三小



■04第四小

年齢3区分別人口	※2020年までは実績値				構成比			
	年少人口	生産年齢人口	老年人口	合計	年少人口割合	生産年齢割合	老年人口割合	合計
2019	1,319	7,586	2,821	11,726	11.2%	64.7%	24.1%	100.0%
2020	1,252	7,520	2,826	11,598	10.8%	64.8%	24.4%	100.0%
2021	1,251	7,451	2,809	11,511	10.9%	64.7%	24.4%	100.0%
2022	1,219	7,435	2,769	11,422	10.7%	65.1%	24.2%	100.0%
2023	1,192	7,422	2,724	11,338	10.5%	65.5%	24.0%	100.0%
2024	1,174	7,394	2,684	11,252	10.4%	65.7%	23.9%	100.0%
2025	1,158	7,369	2,639	11,166	10.4%	66.0%	23.6%	100.0%
2026	1,140	7,346	2,601	11,088	10.3%	66.3%	23.5%	100.0%
2027	1,134	7,298	2,578	11,010	10.3%	66.3%	23.4%	100.0%
2028	1,113	7,264	2,555	10,933	10.2%	66.4%	23.4%	100.0%
2029	1,093	7,202	2,560	10,855	10.1%	66.3%	23.6%	100.0%
2030	1,085	7,137	2,556	10,779	10.1%	66.2%	23.7%	100.0%
2031	1,093	7,047	2,575	10,715	10.2%	65.8%	24.0%	100.0%
2032	1,092	7,011	2,548	10,650	10.3%	65.8%	23.9%	100.0%
2033	1,099	6,890	2,596	10,584	10.4%	65.1%	24.5%	100.0%
2034	1,117	6,759	2,639	10,515	10.6%	64.3%	25.1%	100.0%
2035	1,113	6,652	2,678	10,442	10.7%	63.7%	25.6%	100.0%
2036	1,108	6,553	2,719	10,381	10.7%	63.1%	26.2%	100.0%
2037	1,106	6,443	2,768	10,317	10.7%	62.5%	26.8%	100.0%
2038	1,103	6,330	2,819	10,252	10.8%	61.7%	27.5%	100.0%
2039	1,103	6,225	2,857	10,185	10.8%	61.1%	28.0%	100.0%
2040	1,105	6,129	2,884	10,118	10.9%	60.6%	28.5%	100.0%
2041	1,107	6,017	2,931	10,055	11.0%	59.8%	29.1%	100.0%
2042	1,110	5,935	2,947	9,991	11.1%	59.4%	29.5%	100.0%
2043	1,110	5,860	2,957	9,927	11.2%	59.0%	29.8%	100.0%
2044	1,109	5,779	2,973	9,861	11.2%	58.6%	30.2%	100.0%
2045	1,103	5,722	2,968	9,793	11.3%	58.4%	30.3%	100.0%

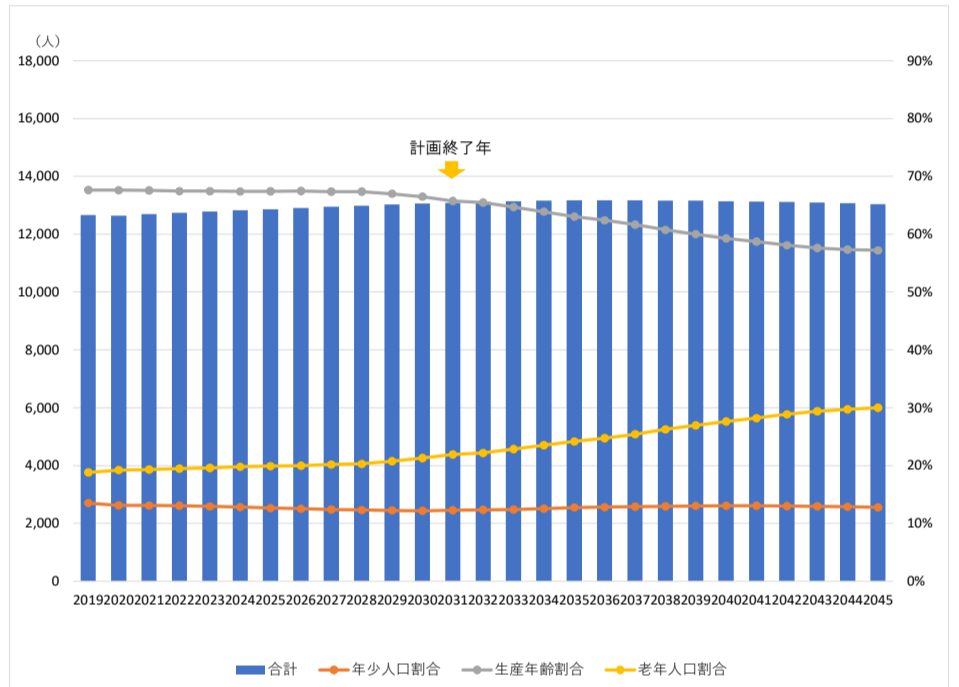
■04第四小



■05第五小

年齢3区分別人口	※2020年までは実績値				構成比			
	年少人口	生産年齢人口	老年人口	合計	年少人口割合	生産年齢割合	老年人口割合	合計
2019	1,713	8,568	2,384	12,665	13.5%	67.7%	18.8%	100.0%
2020	1,659	8,554	2,434	12,647	13.1%	67.6%	19.2%	100.0%
2021	1,664	8,581	2,453	12,697	13.1%	67.6%	19.3%	100.0%
2022	1,664	8,599	2,481	12,744	13.1%	67.5%	19.5%	100.0%
2023	1,654	8,627	2,508	12,788	12.9%	67.5%	19.6%	100.0%
2024	1,644	8,648	2,539	12,831	12.8%	67.4%	19.8%	100.0%
2025	1,629	8,678	2,562	12,869	12.7%	67.4%	19.9%	100.0%
2026	1,620	8,715	2,579	12,913	12.5%	67.5%	20.0%	100.0%
2027	1,610	8,727	2,615	12,951	12.4%	67.4%	20.2%	100.0%
2028	1,601	8,753	2,635	12,988	12.3%	67.4%	20.3%	100.0%
2029	1,597	8,726	2,703	13,026	12.3%	67.0%	20.8%	100.0%
2030	1,592	8,688	2,782	13,061	12.2%	66.5%	21.3%	100.0%
2031	1,610	8,606	2,871	13,087	12.3%	65.8%	21.9%	100.0%
2032	1,619	8,586	2,908	13,113	12.3%	65.5%	22.2%	100.0%
2033	1,632	8,502	3,004	13,138	12.4%	64.7%	22.9%	100.0%
2034	1,653	8,406	3,098	13,156	12.6%	63.9%	23.5%	100.0%
2035	1,680	8,307	3,184	13,170	12.8%	63.1%	24.2%	100.0%
2036	1,690	8,220	3,262	13,172	12.8%	62.4%	24.8%	100.0%
2037	1,699	8,121	3,351	13,171	12.9%	61.7%	25.4%	100.0%
2038	1,707	8,001	3,458	13,166	13.0%	60.8%	26.3%	100.0%
2039	1,714	7,899	3,545	13,158	13.0%	60.0%	26.9%	100.0%
2040	1,717	7,793	3,634	13,145	13.1%	59.3%	27.6%	100.0%
2041	1,714	7,710	3,707	13,131	13.1%	58.7%	28.2%	100.0%
2042	1,707	7,622	3,785	13,114	13.0%	58.1%	28.9%	100.0%
2043	1,697	7,548	3,850	13,094	13.0%	57.6%	29.4%	100.0%
2044	1,684	7,498	3,889	13,071	12.9%	57.4%	29.8%	100.0%
2045	1,667	7,463	3,914	13,043	12.8%	57.2%	30.0%	100.0%

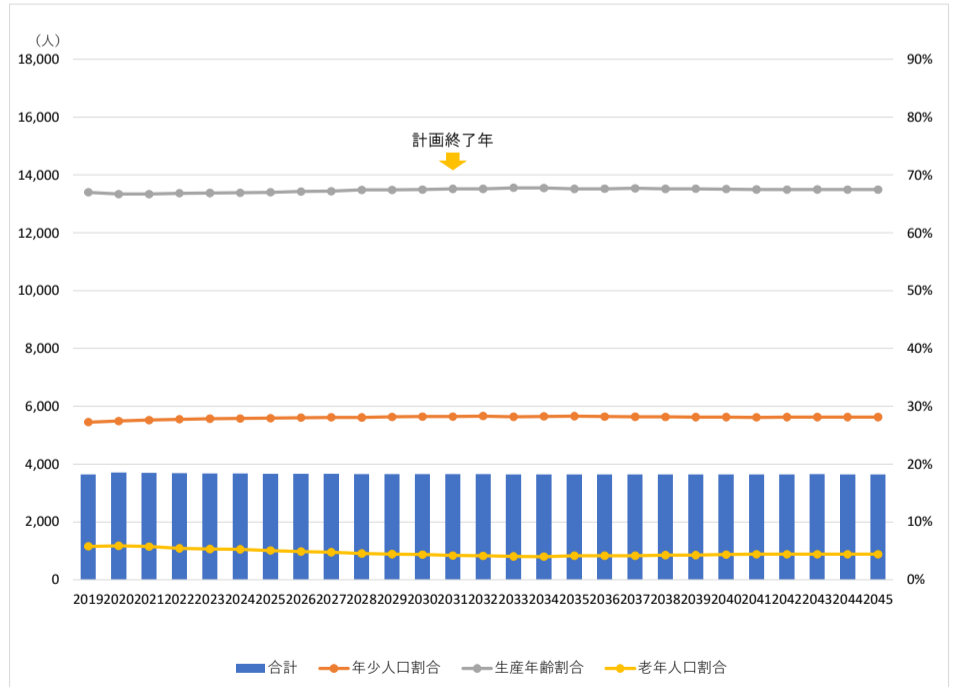
■05第五小



■06広沢小

年齢3区分別人口	※2020年までは実績値				構成比			
	年少人口	生産年齢人口	老年人口	合計	年少人口割合	生産年齢割合	老年人口割合	合計
2019	991	2,437	210	3,638	27.2%	67.0%	5.8%	100.0%
2020	1,018	2,473	218	3,709	27.4%	66.7%	5.9%	100.0%
2021	1,020	2,467	212	3,699	27.6%	66.7%	5.7%	100.0%
2022	1,023	2,465	201	3,689	27.7%	66.8%	5.4%	100.0%
2023	1,024	2,460	195	3,679	27.8%	66.9%	5.3%	100.0%
2024	1,023	2,456	192	3,671	27.9%	66.9%	5.2%	100.0%
2025	1,024	2,456	185	3,666	27.9%	67.0%	5.1%	100.0%
2026	1,026	2,457	178	3,661	28.0%	67.1%	4.9%	100.0%
2027	1,027	2,457	173	3,657	28.1%	67.2%	4.7%	100.0%
2028	1,026	2,464	166	3,656	28.1%	67.4%	4.5%	100.0%
2029	1,029	2,463	162	3,654	28.1%	67.4%	4.4%	100.0%
2030	1,031	2,464	158	3,652	28.2%	67.5%	4.3%	100.0%
2031	1,030	2,468	153	3,651	28.2%	67.6%	4.2%	100.0%
2032	1,033	2,466	151	3,650	28.3%	67.6%	4.1%	100.0%
2033	1,029	2,473	147	3,649	28.2%	67.8%	4.0%	100.0%
2034	1,031	2,472	146	3,648	28.3%	67.8%	4.0%	100.0%
2035	1,032	2,466	151	3,649	28.3%	67.6%	4.2%	100.0%
2036	1,030	2,467	152	3,649	28.2%	67.6%	4.2%	100.0%
2037	1,028	2,469	152	3,649	28.2%	67.7%	4.2%	100.0%
2038	1,027	2,466	156	3,649	28.1%	67.6%	4.3%	100.0%
2039	1,026	2,467	156	3,649	28.1%	67.6%	4.3%	100.0%
2040	1,026	2,465	158	3,649	28.1%	67.5%	4.3%	100.0%
2041	1,026	2,463	161	3,649	28.1%	67.5%	4.4%	100.0%
2042	1,026	2,462	161	3,649	28.1%	67.5%	4.4%	100.0%
2043	1,026	2,463	161	3,650	28.1%	67.5%	4.4%	100.0%
2044	1,027	2,462	160	3,649	28.1%	67.5%	4.4%	100.0%
2045	1,026	2,461	160	3,648	28.1%	67.5%	4.4%	100.0%

■06広沢小



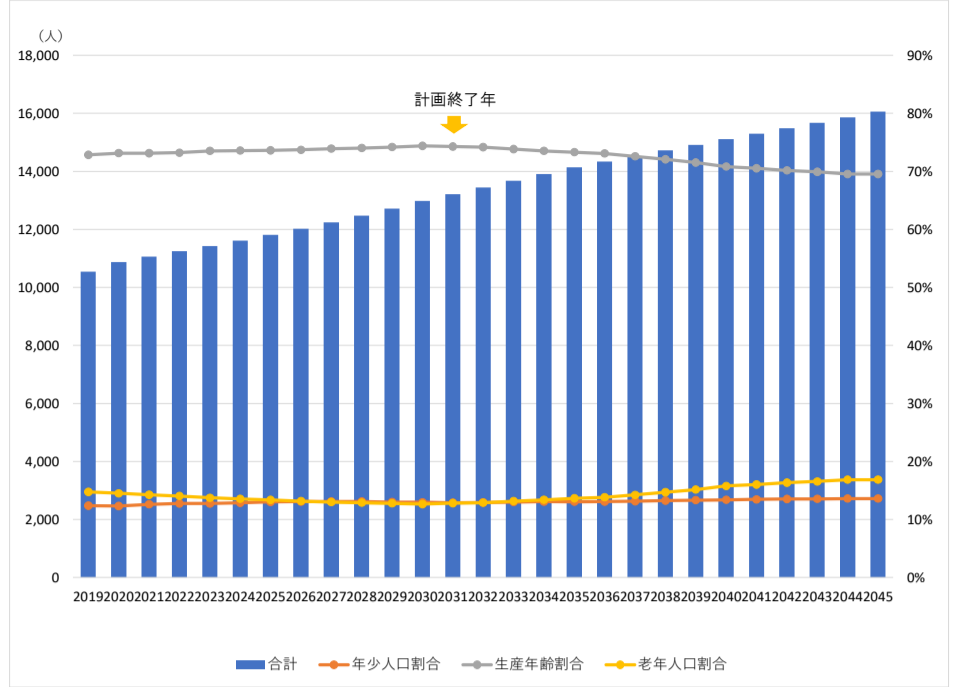
■07北原小

年齢3区分別人口

※2020年までは実績値

年	年齢3区分別人口				構成比			
	年少人口	生産年齢人口	老年人口	合計	年少人口割合	生産年齢割合	老年人口割合	合計
2019	1,306	7,679	1,557	10,542	12.4%	72.8%	14.8%	100.0%
2020	1,340	7,955	1,578	10,873	12.3%	73.2%	14.5%	100.0%
2021	1,395	8,087	1,577	11,059	12.6%	73.1%	14.3%	100.0%
2022	1,433	8,230	1,578	11,242	12.7%	73.2%	14.0%	100.0%
2023	1,456	8,398	1,569	11,422	12.7%	73.5%	13.7%	100.0%
2024	1,494	8,542	1,573	11,609	12.9%	73.6%	13.5%	100.0%
2025	1,538	8,691	1,576	11,806	13.0%	73.6%	13.4%	100.0%
2026	1,574	8,857	1,583	12,014	13.1%	73.7%	13.2%	100.0%
2027	1,601	9,046	1,590	12,238	13.1%	73.9%	13.0%	100.0%
2028	1,631	9,235	1,609	12,475	13.1%	74.0%	12.9%	100.0%
2029	1,653	9,441	1,627	12,721	13.0%	74.2%	12.8%	100.0%
2030	1,682	9,656	1,642	12,980	13.0%	74.4%	12.6%	100.0%
2031	1,705	9,809	1,693	13,207	12.9%	74.3%	12.8%	100.0%
2032	1,740	9,968	1,734	13,443	12.9%	74.2%	12.9%	100.0%
2033	1,777	10,100	1,801	13,678	13.0%	73.8%	13.2%	100.0%
2034	1,821	10,224	1,862	13,907	13.1%	73.5%	13.4%	100.0%
2035	1,845	10,360	1,930	14,136	13.1%	73.3%	13.7%	100.0%
2036	1,878	10,474	1,981	14,333	13.1%	73.1%	13.8%	100.0%
2037	1,912	10,547	2,069	14,528	13.2%	72.6%	14.2%	100.0%
2038	1,949	10,609	2,165	14,722	13.2%	72.1%	14.7%	100.0%
2039	1,987	10,666	2,261	14,915	13.3%	71.5%	15.2%	100.0%
2040	2,024	10,698	2,382	15,104	13.4%	70.8%	15.8%	100.0%
2041	2,058	10,788	2,449	15,295	13.5%	70.5%	16.0%	100.0%
2042	2,093	10,865	2,529	15,486	13.5%	70.2%	16.3%	100.0%
2043	2,125	10,959	2,592	15,676	13.6%	69.9%	16.5%	100.0%
2044	2,159	11,033	2,675	15,867	13.6%	69.5%	16.9%	100.0%
2045	2,186	11,165	2,704	16,056	13.6%	69.5%	16.8%	100.0%

■07北原小



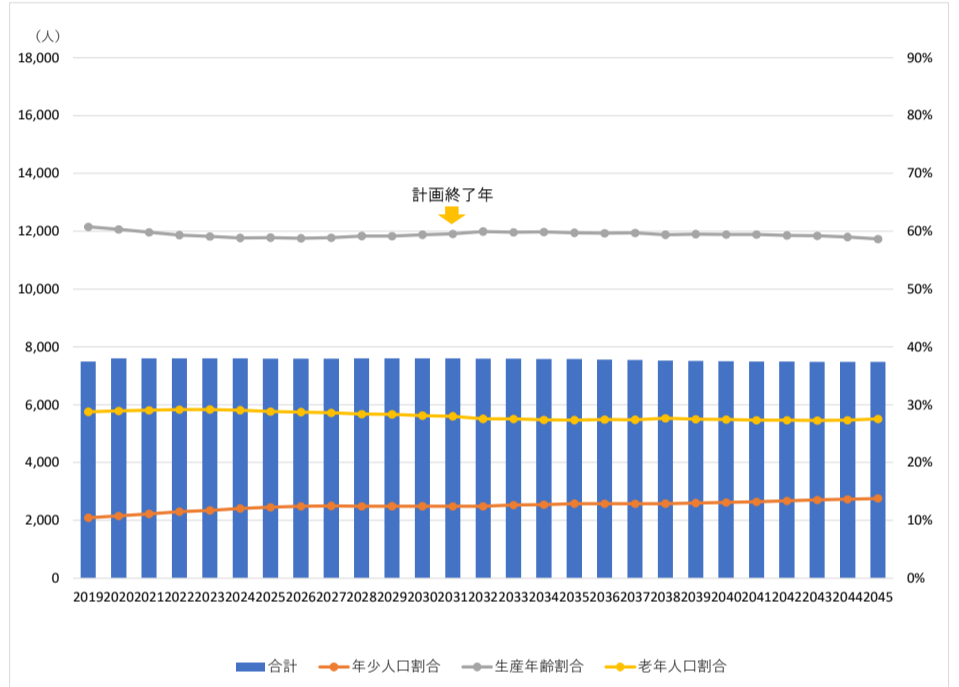
■08本町小

年齢3区分別人口

※2020年までは実績値

年	年齢3区分別人口				構成比			
	年少人口	生産年齢人口	老年人口	合計	年少人口割合	生産年齢割合	老年人口割合	合計
2019	783	4,553	2,156	7,492	10.5%	60.8%	28.8%	100.0%
2020	819	4,591	2,202	7,612	10.8%	60.3%	28.9%	100.0%
2021	850	4,554	2,210	7,613	11.2%	59.8%	29.0%	100.0%
2022	877	4,516	2,219	7,612	11.5%	59.3%	29.1%	100.0%
2023	892	4,495	2,220	7,607	11.7%	59.1%	29.2%	100.0%
2024	919	4,475	2,209	7,603	12.1%	58.9%	29.1%	100.0%
2025	932	4,477	2,189	7,597	12.3%	58.9%	28.8%	100.0%
2026	945	4,468	2,185	7,598	12.4%	58.8%	28.8%	100.0%
2027	950	4,476	2,174	7,599	12.5%	58.9%	28.6%	100.0%
2028	946	4,499	2,156	7,602	12.5%	59.2%	28.4%	100.0%
2029	949	4,500	2,155	7,604	12.5%	59.2%	28.3%	100.0%
2030	948	4,518	2,139	7,606	12.5%	59.4%	28.1%	100.0%
2031	947	4,525	2,130	7,602	12.5%	59.5%	28.0%	100.0%
2032	947	4,555	2,096	7,598	12.5%	60.0%	27.6%	100.0%
2033	962	4,542	2,091	7,594	12.7%	59.8%	27.5%	100.0%
2034	965	4,543	2,079	7,588	12.7%	59.9%	27.4%	100.0%
2035	978	4,528	2,074	7,579	12.9%	59.7%	27.4%	100.0%
2036	974	4,513	2,076	7,563	12.9%	59.7%	27.5%	100.0%
2037	972	4,506	2,069	7,546	12.9%	59.7%	27.4%	100.0%
2038	973	4,474	2,084	7,532	12.9%	59.4%	27.7%	100.0%
2039	977	4,474	2,066	7,517	13.0%	59.5%	27.5%	100.0%
2040	983	4,461	2,060	7,505	13.1%	59.4%	27.5%	100.0%
2041	992	4,457	2,049	7,498	13.2%	59.4%	27.3%	100.0%
2042	1,002	4,442	2,048	7,493	13.4%	59.3%	27.3%	100.0%
2043	1,013	4,434	2,042	7,489	13.5%	59.2%	27.3%	100.0%
2044	1,022	4,417	2,046	7,485	13.7%	59.0%	27.3%	100.0%
2045	1,033	4,389	2,061	7,483	13.8%	58.7%	27.5%	100.0%

■08本町小



■09下新倉小

年齢3区分別人口

※2020年までは実績値

年	年齢3区分別人口				構成比			
	年少人口	生産年齢人口	老年人口	合計	年少人口割合	生産年齢割合	老年人口割合	合計
2019	1,354	5,385	1,325	8,064	16.8%	66.8%	16.4%	100.0%
2020	1,335	5,383	1,337	8,055	16.6%	66.8%	16.6%	100.0%
2021	1,311	5,413	1,350	8,074	16.2%	67.0%	16.7%	100.0%
2022	1,288	5,461	1,341	8,090	15.9%	67.5%	16.6%	100.0%
2023	1,259	5,502	1,343	8,104	15.5%	67.9%	16.6%	100.0%
2024	1,231	5,544	1,339	8,114	15.2%	68.3%	16.5%	100.0%
2025	1,190	5,586	1,348	8,124	14.6%	68.8%	16.6%	100.0%
2026	1,137	5,632	1,369	8,138	14.0%	69.2%	16.8%	100.0%
2027	1,080	5,692	1,380	8,152	13.2%	69.8%	16.9%	100.0%
2028	1,048	5,707	1,410	8,166	12.8%	69.9%	17.3%	100.0%
2029	1,003	5,747	1,427	8,178	12.3%	70.3%	17.5%	100.0%
2030	960	5,795	1,436	8,191	11.7%	70.7%	17.5%	100.0%
2031	931	5,798	1,474	8,203	11.3%	70.7%	18.0%	100.0%
2032	908	5,806	1,498	8,213	11.1%	70.7%	18.2%	100.0%
2033	878	5,774	1,569	8,220	10.7%	70.2%	19.1%	100.0%
2034	862	5,720	1,643	8,225	10.5%	69.5%	20.0%	100.0%
2035	849	5,682	1,697	8,228	10.3%	69.1%	20.6%	100.0%
2036	846	5,617	1,766	8,229	10.3%	68.3%	21.5%	100.0%
2037	846	5,536	1,844	8,226	10.3%	67.3%	22.4%	100.0%
2038	848	5,462	1,911	8,222	10.3%	66.4%	23.2%	100.0%
2039	853	5,369	1,992	8,214	10.4%	65.4%	24.3%	100.0%
2040	859	5,288	2,059	8,207	10.5%	64.4%	25.1%	100.0%
2041	865	5,198	2,138	8,201	10.5%	63.4%	26.1%	100.0%
2042	872	5,123	2,197	8,193	10.6%	62.5%	26.8%	100.0%
2043	880	5,058	2,245	8,184	10.8%	61.8%	27.4%	100.0%
2044	889	4,993	2,291	8,173	10.9%	61.1%	28.0%	100.0%
2045	898	4,927	2,335	8,159	11.0%	60.4%	28.6%	100.0%

■09下新倉小

